

# CONORG

MIS SOLUTIONS

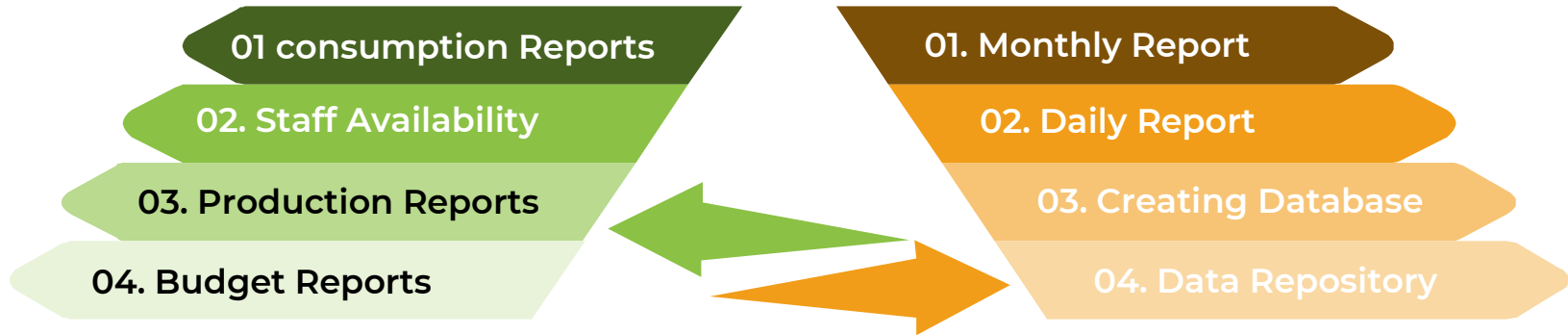


contact@conorg.in



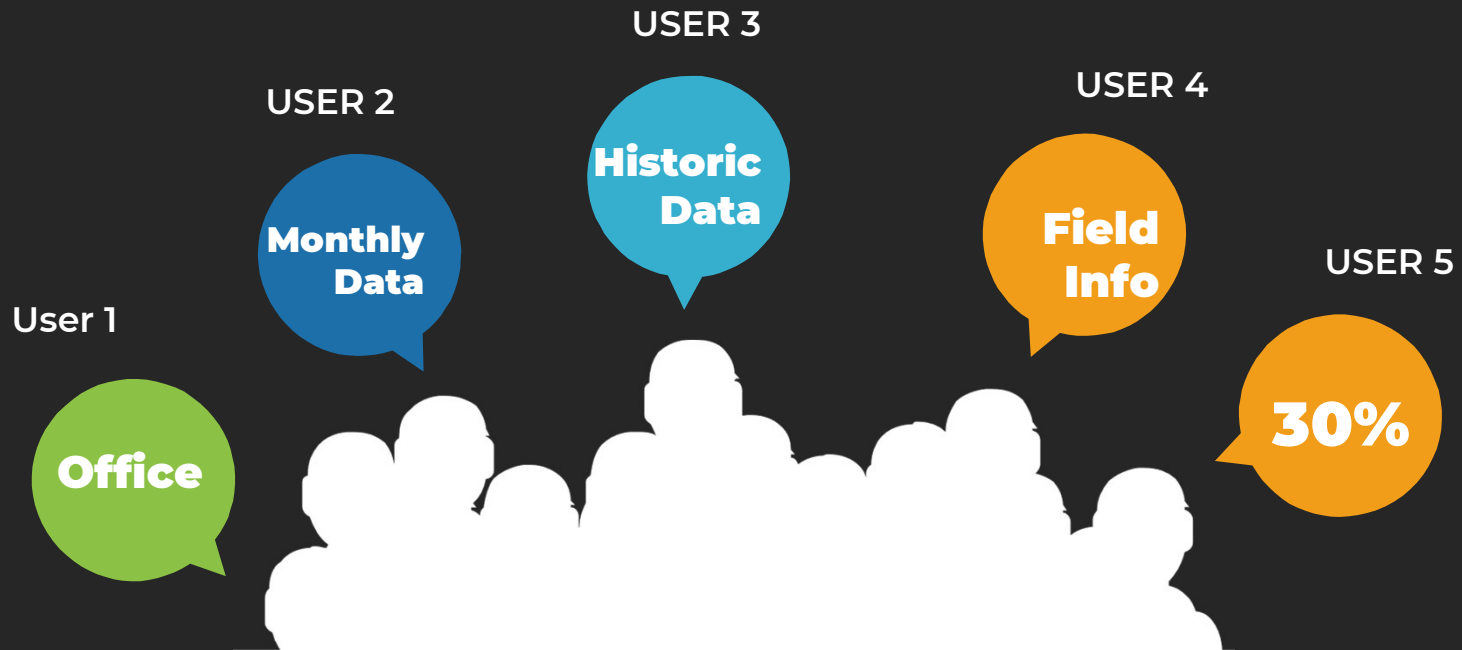
# What is MIS Solution

Any Information you require to take valuable decisions or database required to present to your Senior Officer is MIS  
"MANAGEMENT INFORMATION SYSTEM"



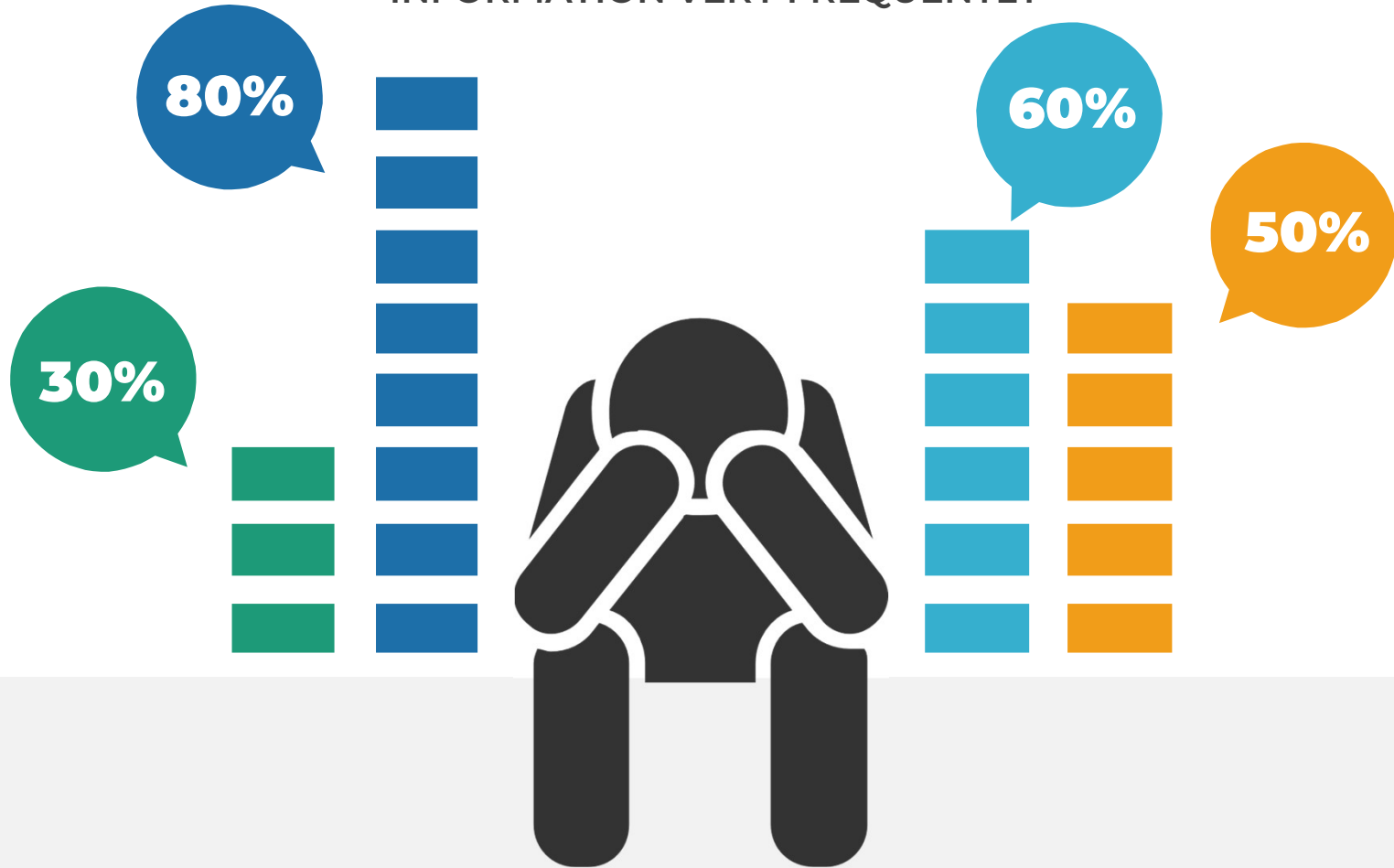
# Challenges in MIS

1. Multiple users & multiple data, numerous time period



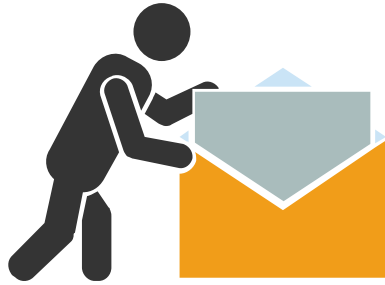
# Challenges in MIS

2. USERS TENDS TO CHANGE THEIR INFORMATION VERY FREQUENTLY



# Challenges in MIS

3. INFORMATION HAD TO BE COMPILED ,  
FORMATTED AND THEN PRESENTED



Collection of  
Information from  
multiple sources



Compilation &  
Formatting of Data



Presentation of  
information by taking  
print outs or sharing  
them through Emails

# Optimum Solution

That would resolve all your issues  
with Data and MIS

*We Offer !*



1. Live Access to Data
2. Multiple users can work on the information together
3. Excel Like Functionality
4. Users can log into the system through their credentials and can access, edit or add information
5. Users cant change data of other Users

# Outstanding Features

- **Sorting**
- **Filtering**
- **Scrollable**

- **Secure**
- **Login & Edit**
- **Live changes**

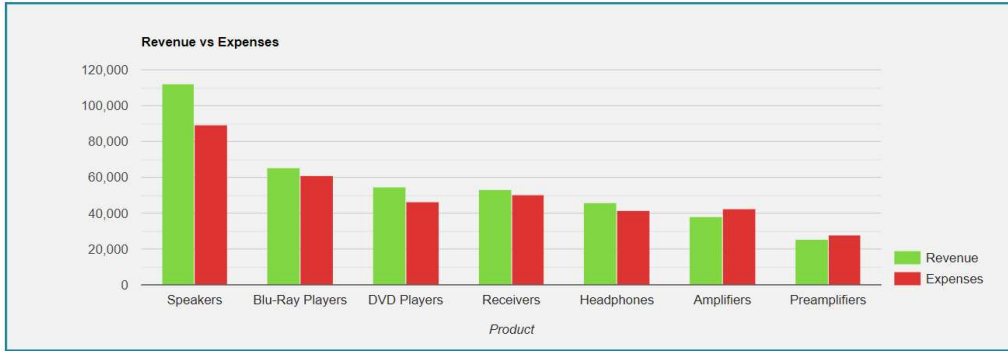


- **Google Charts**
- **High Charts**
- **Java Script Charts**

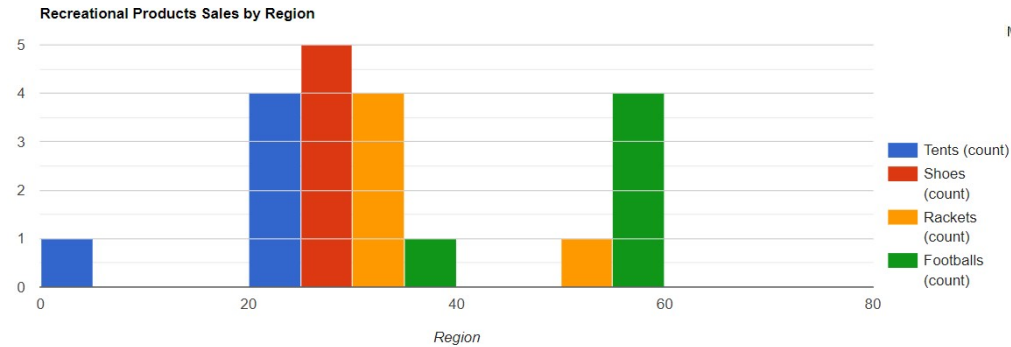
- **Easy download**
- **Pdf, excel, word**
- **sharable**

# **Some Examples**

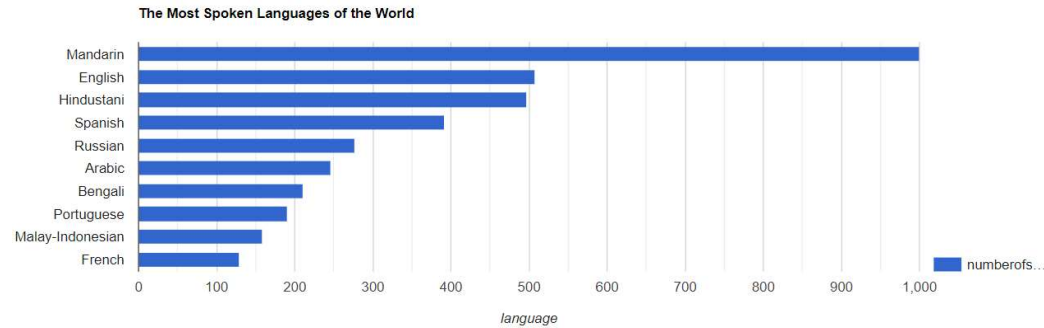




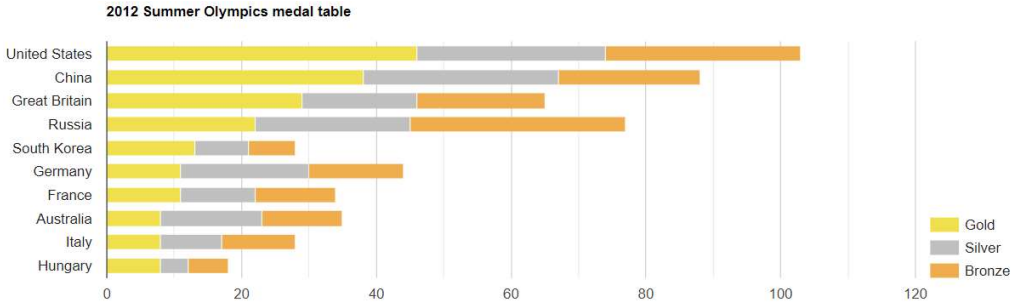
Column chart is a basic chart where series are rendered in simple vertical columns



A histogram is a chart that groups numeric data into bins and displays the bins as segmented columns. They're used to depict the distribution of a dataset: i.e., how often values fall into ranges



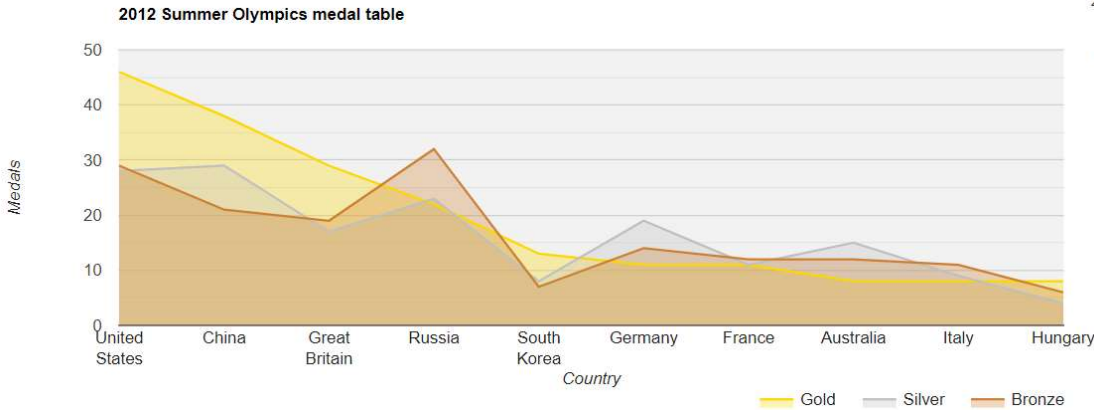
Bar chart shows series data in horizontal bars.



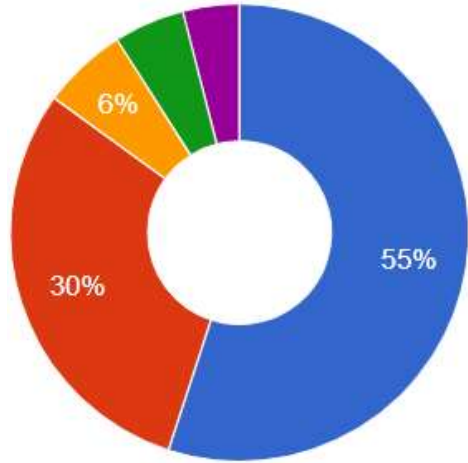
**Stacked Bar Chart** : This chart type is similar to a basic bar chart, but the series values are “stacked” to the right of each other in the horizontal bars.



A Stepped Area chart is very similar to the “typical” area chart, but the angles are straight

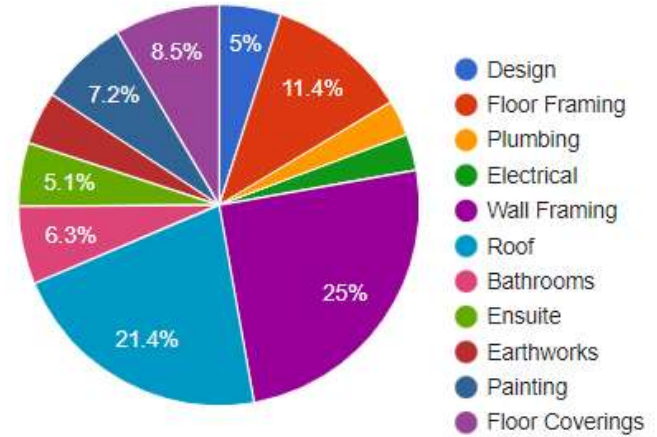


An area chart is similar to a Line chart, but the area below a series line is colored



A Donut Chart is similar to Pie chart, but it has an empty inner part so its appearance is more that of a “sliced donut” instead of than a “sliced pie”

Extension Costs

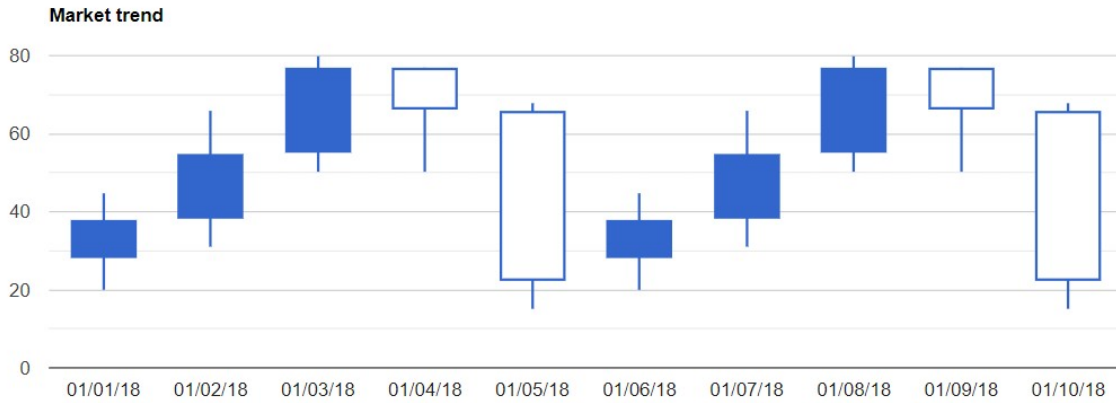


The Pie Chart renders the data in a “sliced pie” format, where each slice stands for one series entry(left pie chart).If you turn on option 3D, your pie chart will be drawn as though it has three dimensions (right pie chart)

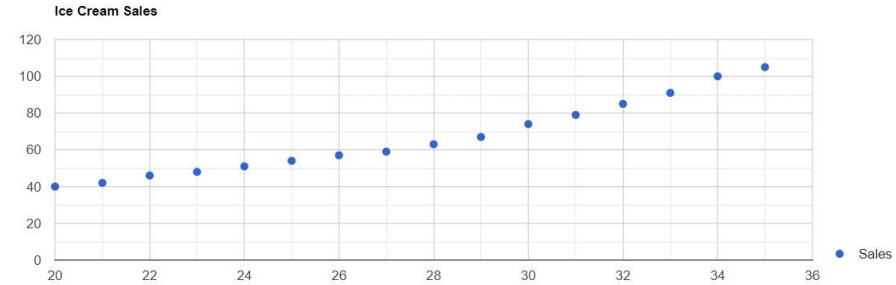
Correlation between life expectancy, fertility rate and population of some world countries (2010)



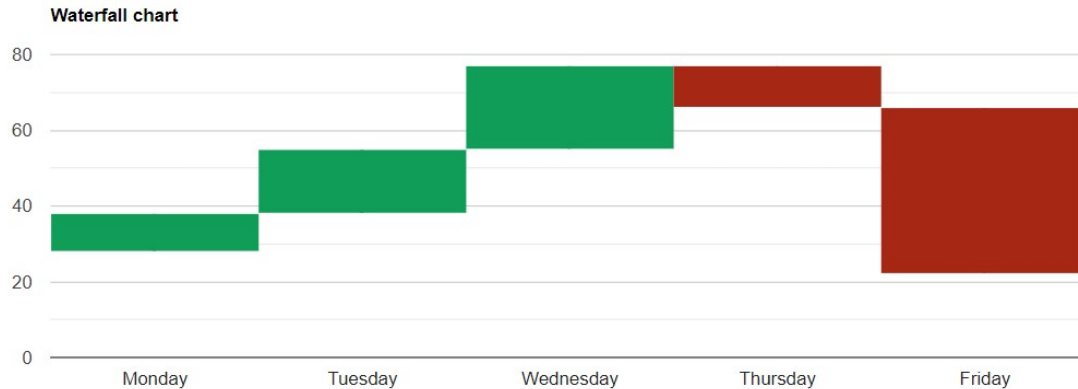
A bubble chart is used to visualize a data set with two to four dimensions. The first two dimensions are visualized as coordinates, the third as color, and the fourth as size”



Candlestick chart is a type of the financial chart that is used to visualize price movements and is often used for decision making in stock, trading and foreign exchange



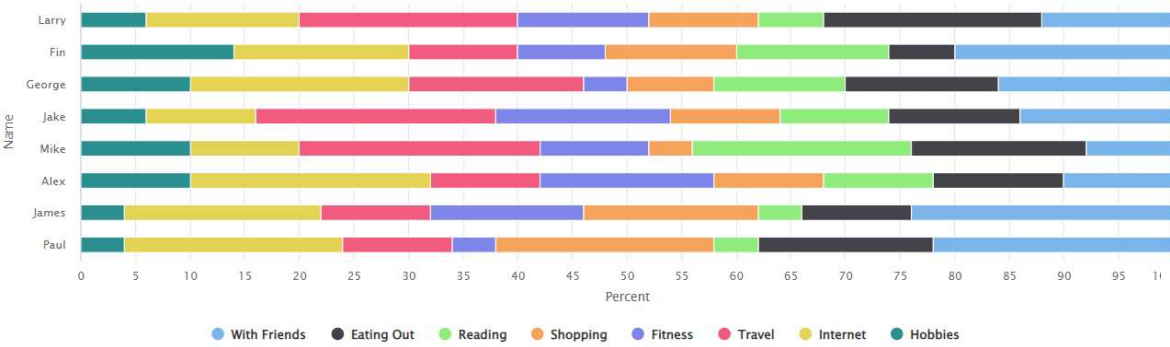
Scatter chart plot points on a graph. When the user hovers over the points, tooltips provide more information



Waterfall chart is used to show how the initial value is affected by a series of positive and/or negative values.

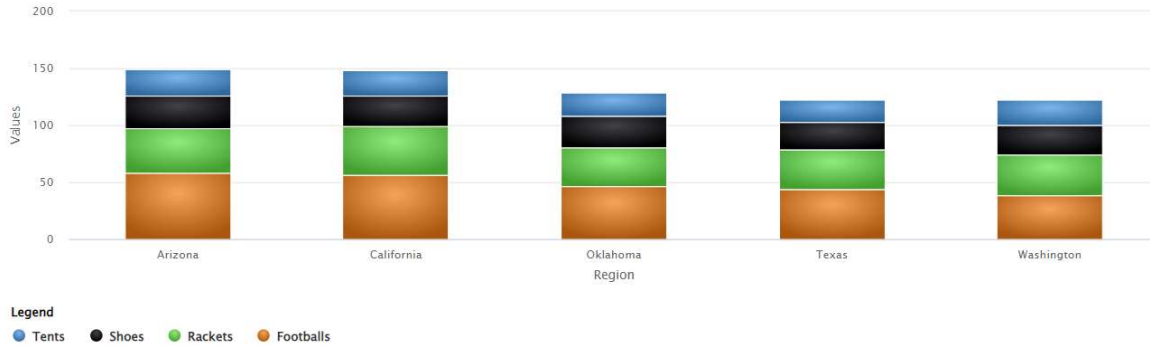
### Time Spent in Holiday Season

Export



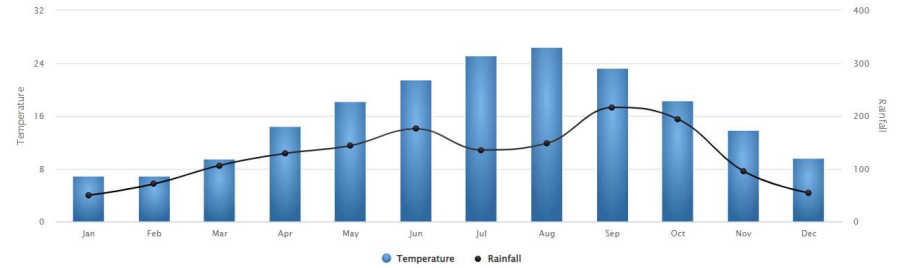
This chart type is similar to a basic bar chart, but the series values are “stacked” to the right of each other in the horizontal bars.

### Recreational Products Sales by Region

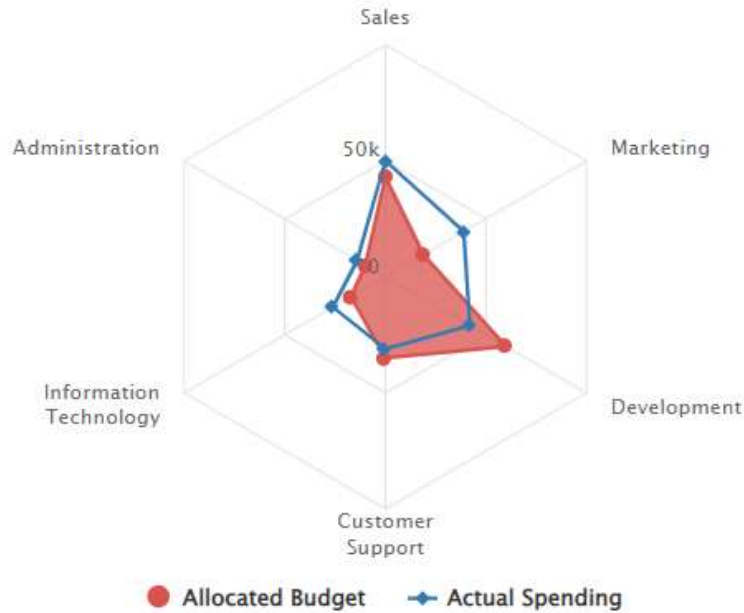


This chart type is very similar to the basic column chart, but the series values are “stacked” on top of one another

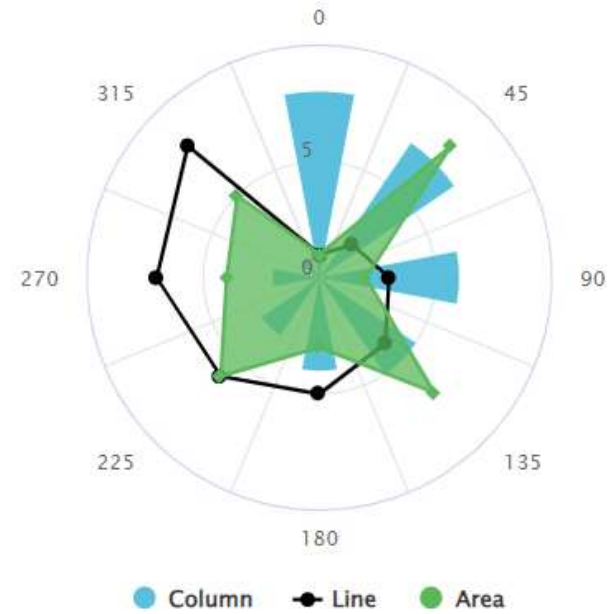
### Average Monthly Temperature and Rainfall



### Budget vs spending



### Polar Chart



The Spiderweb chart is similar like a Polar chart just in a form of a spider web. Here as well series is represented by a closed curve with points in the coordinate system, and each data point is determined by the distance from the pole.

The Polar chart offers you the option to show the data in a two-dimensional chart where a series is represented by a closed curve with points in the polar coordinate system, and each data point is determined by the distance from the pole.